

Street Assessment Program

Hartsfield Village



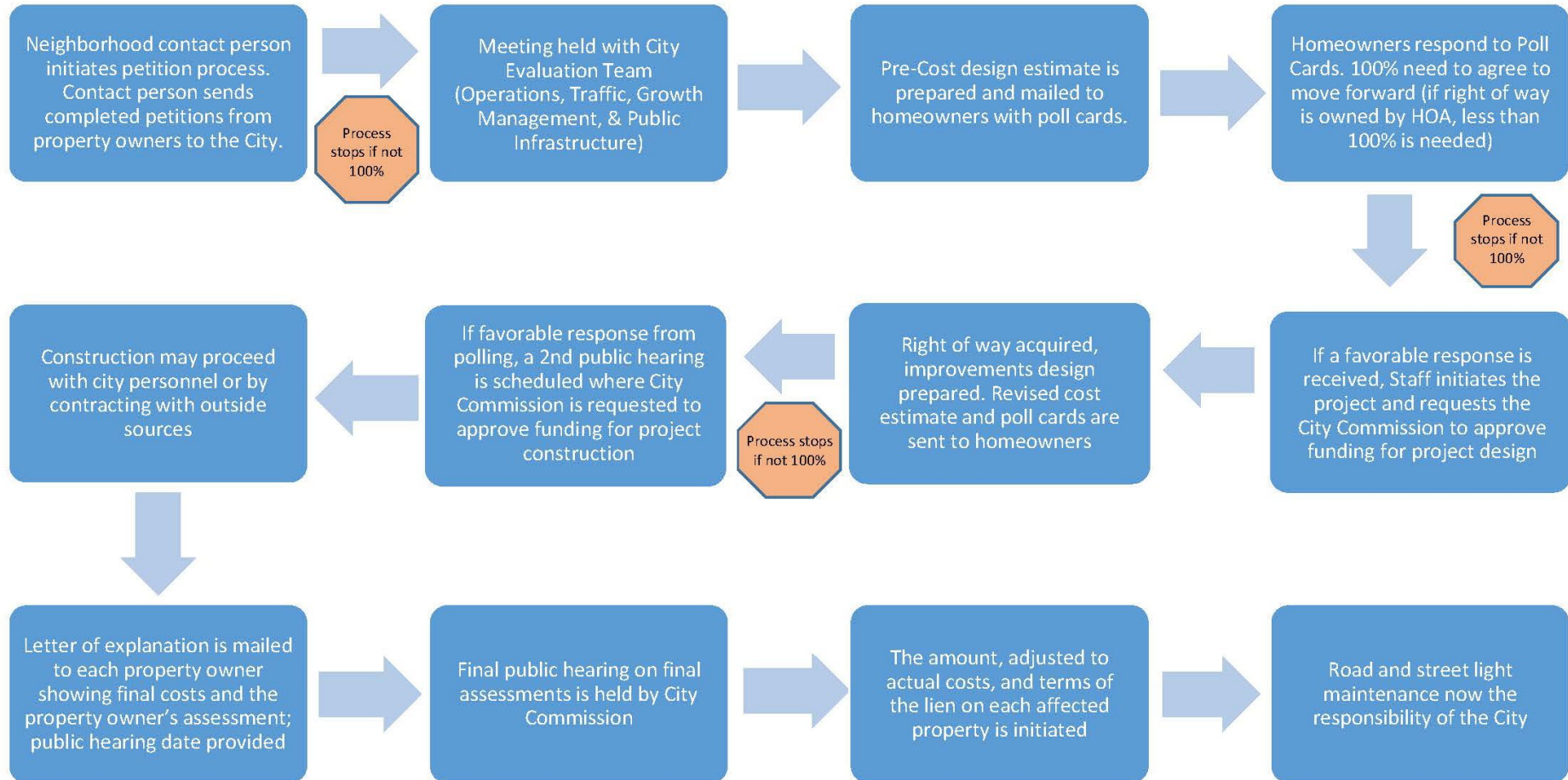
**CITY OF
TALLAHASSEE**

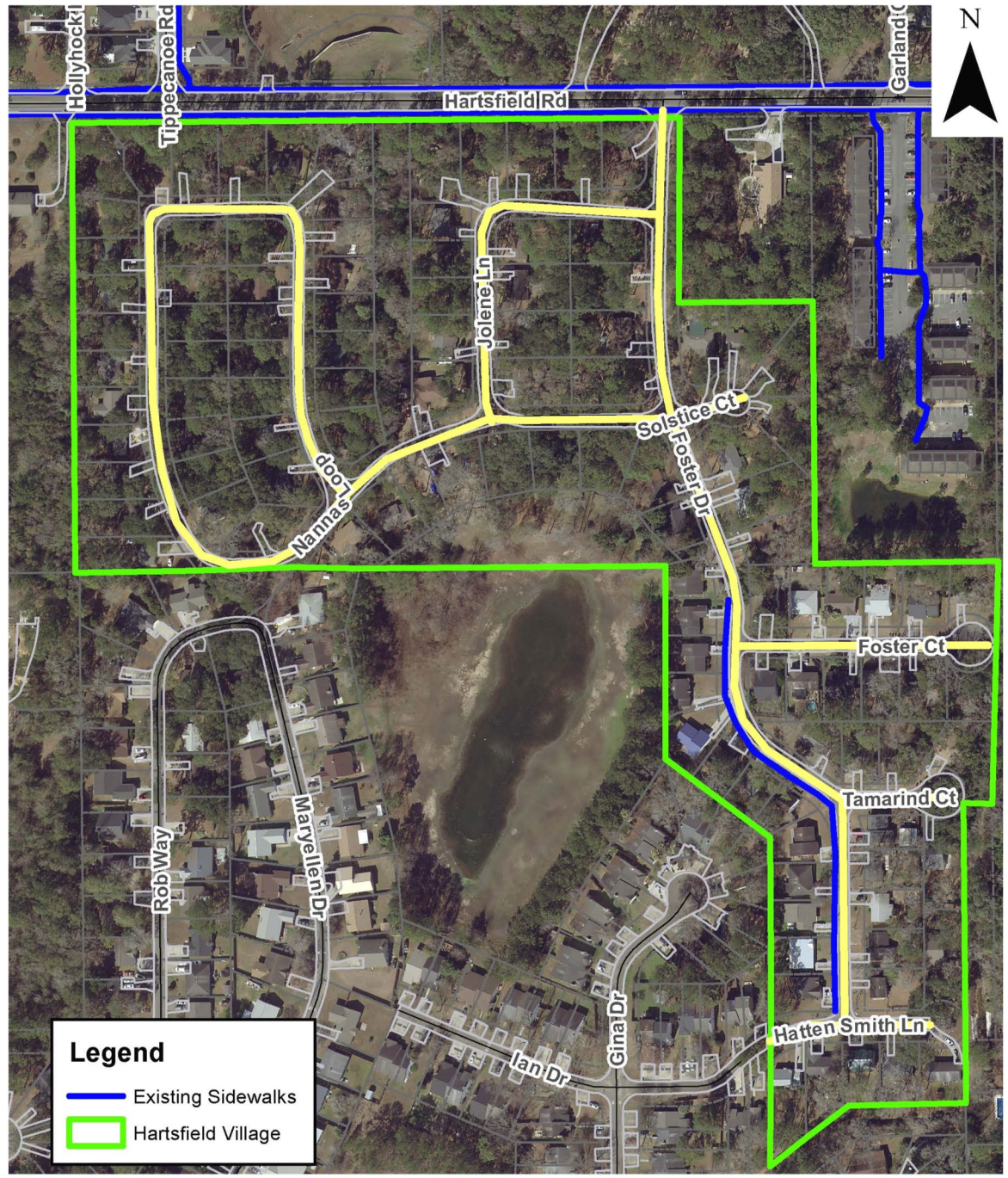
How can your Private Street become Public?



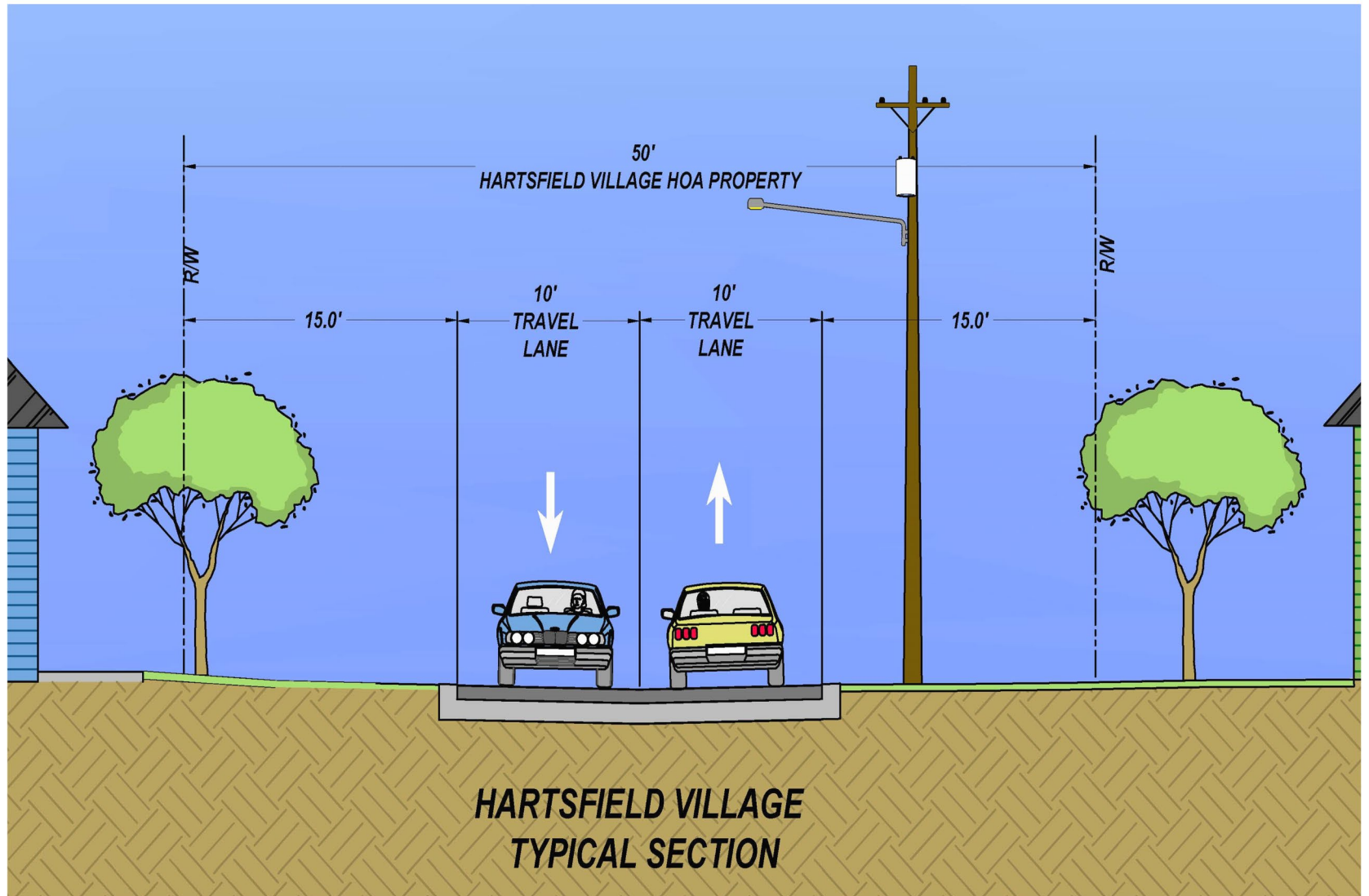
**CITY OF
TALLAHASSEE**

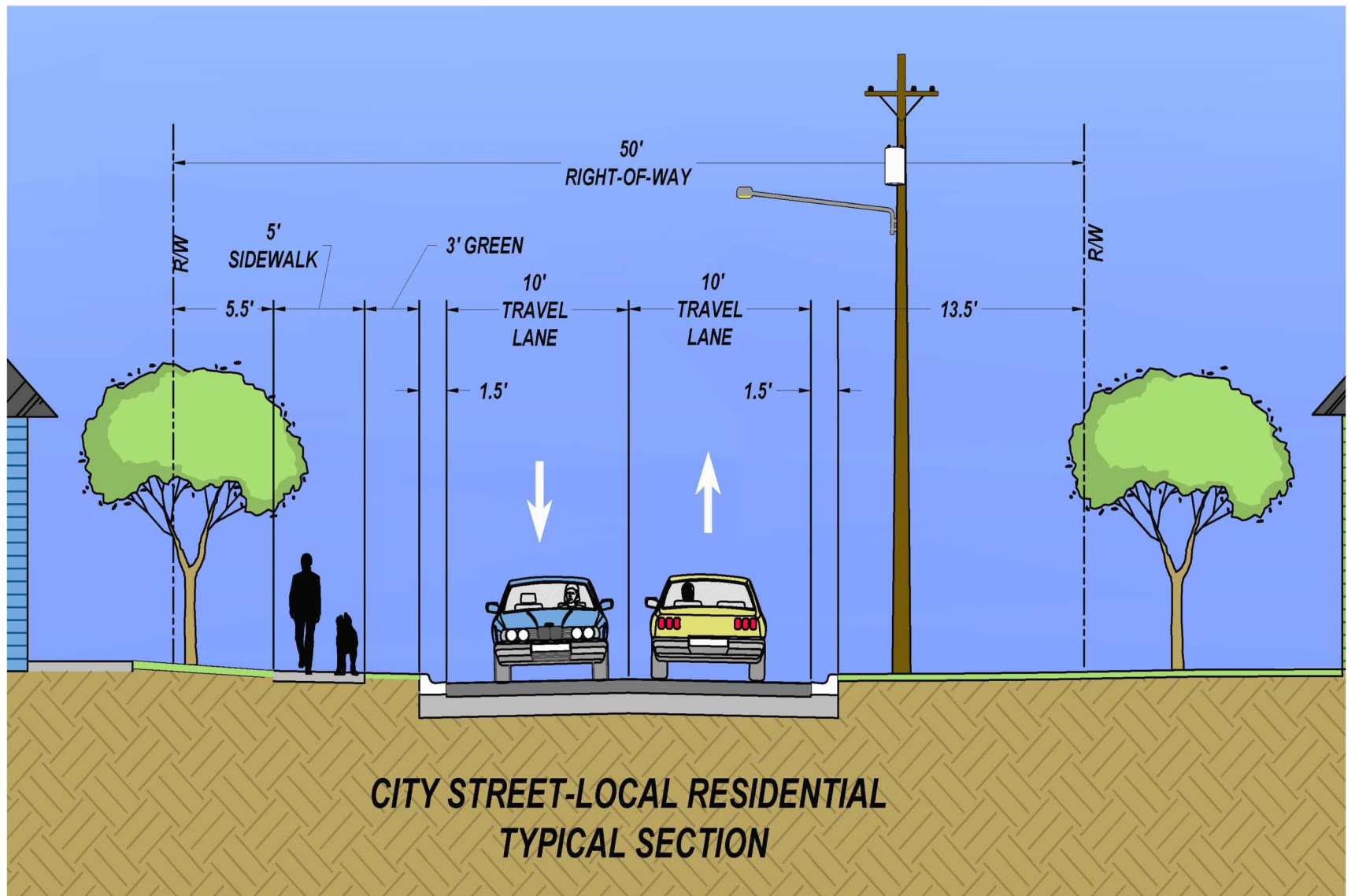
Street Assessment Program Process





Hartsfield Village





Why does the City not allow inverted crown roadway sections?



**CITY OF
TALLAHASSEE**



Sidewalks

- Sidewalks required on Foster Street and Nannas Loop



**CITY OF
TALLAHASSEE**

Stormwater Pond

- Private party owns parcel
- Renew Operating Permit
 - TOP090069



**CITY OF
TALLAHASSEE**

Estimated Costs

- Sidewalks on all streets
- Total project estimate: \$3,726,600
- Hartsfield Homeowners' estimated cost: \$1,863,300
- Estimated cost divided between all 113 parcels: \$16,490
- Monthly estimated tax increase per parcel: \$175
- SWMF parcel will need to be donated



Estimated Costs

- Reduced cost, no sidewalks on the dead-end streets
- Total project estimate: \$3,617,274
- Hartsfield Homeowners' estimated cost: \$1,808,637
- Estimated cost divided between all 113 parcels: \$16,006
- Monthly estimated tax increase per parcel: \$170
- SWMF parcel will need to be donated



Why do we have a Process?

- ≈75 miles of private roadways within the City Limits
- Cost to reconstruct all private roadways to City Standards estimate \$500,000,000
- Right of way constraints, required to donate the right of way



Questions?

City of Tallahassee

Public Infrastructure Engineering Division

850-891-2851

Eric Gooch, P.E., CPM, Manager - Public Infrastructure Engineering

Eric.Gooch@Talgov.com



**CITY OF
TALLAHASSEE**